

Changeover Training Eplan Platform 2025

Two Days Full of Tips and Tricks

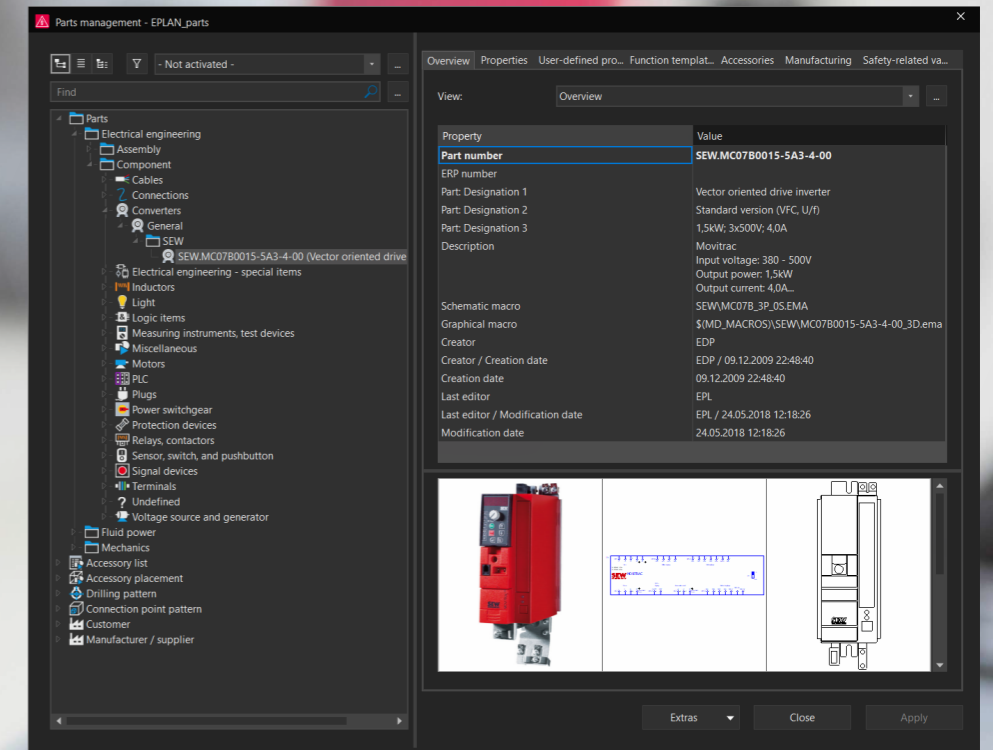
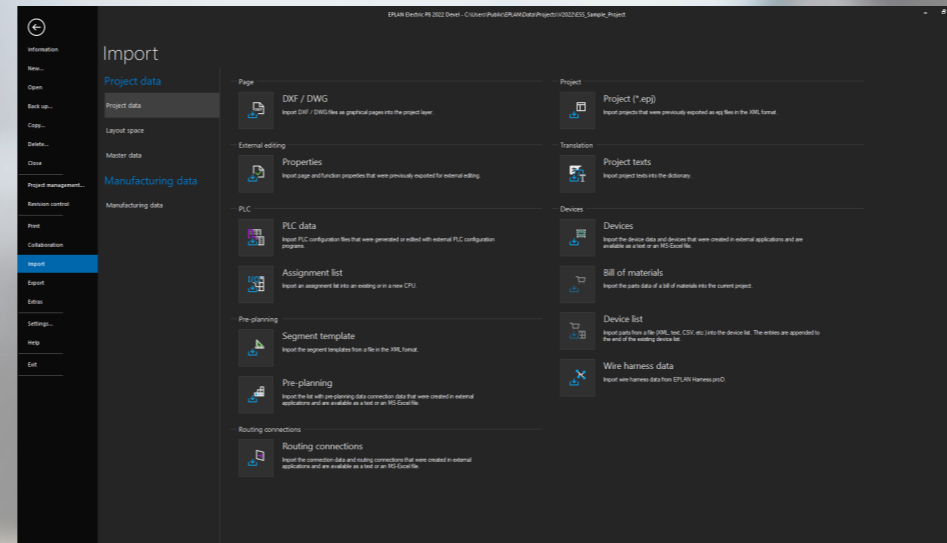
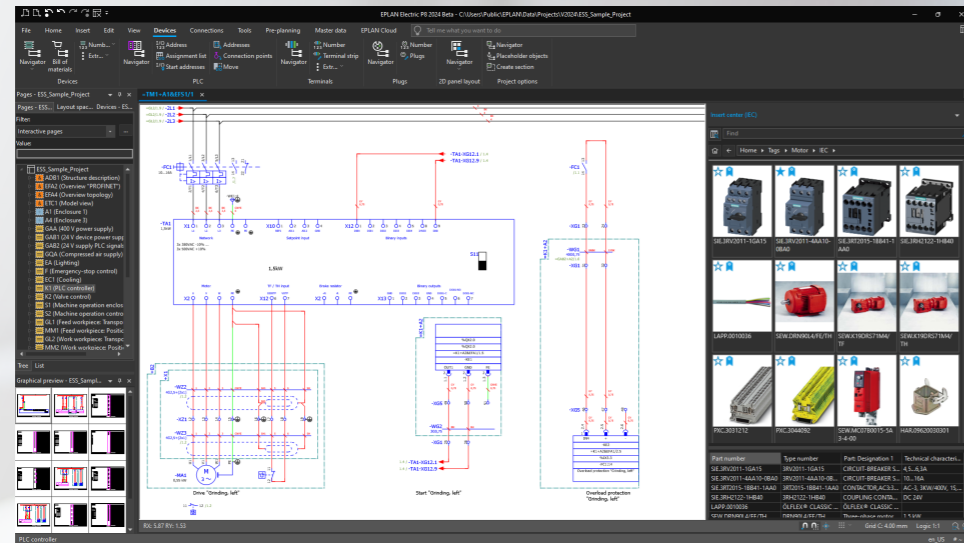
We will help you transition to the new generation of the EPLAN Platform.



Changeover Training Eplan Platform 2025

The Eplan Platform 2025 offers you a state-of-the-art technical foundation for a completely new user experience. In our two-day training, we will get you up to speed on the most important new features and offer you useful tips and tricks for your daily work in engineering.



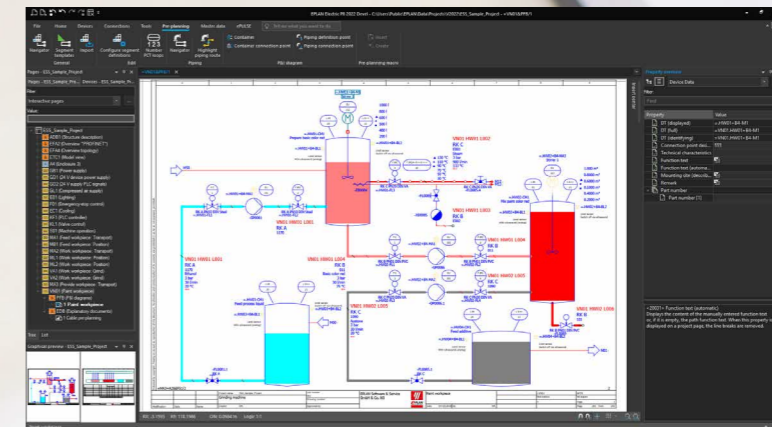
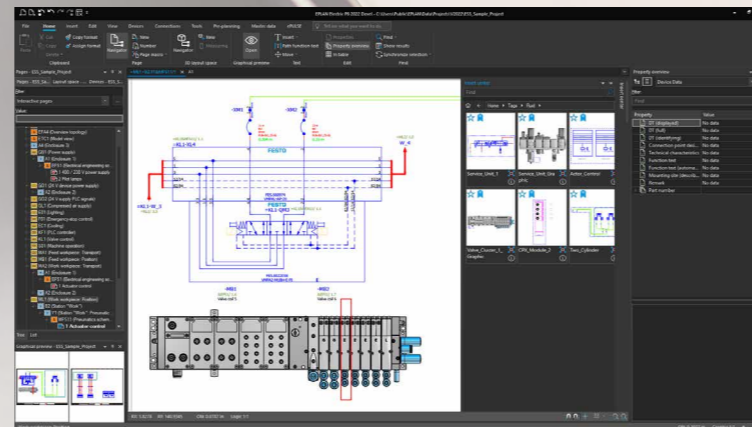
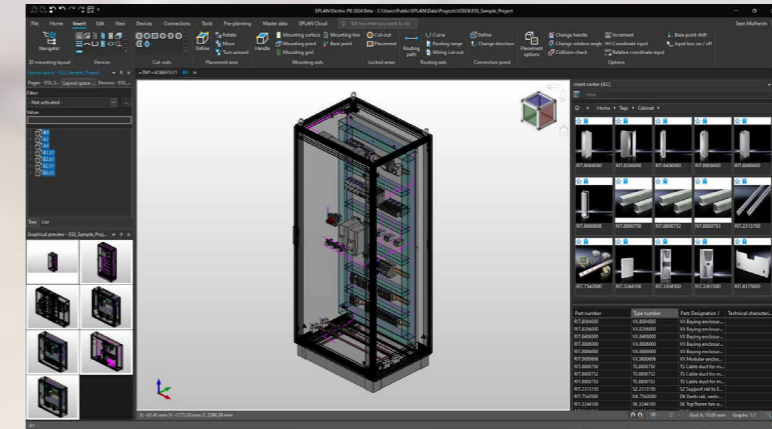
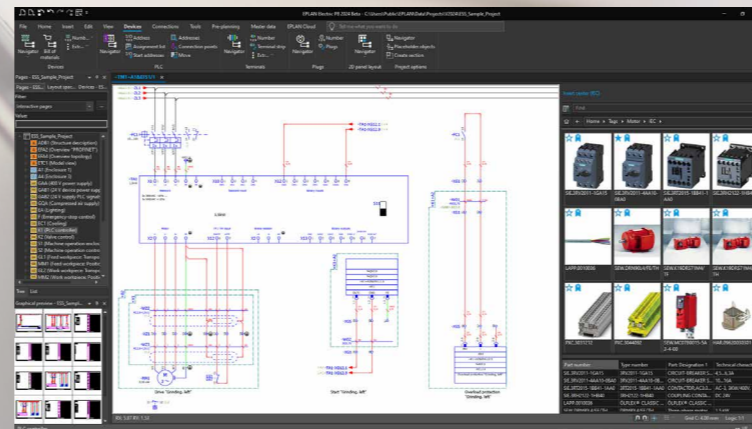


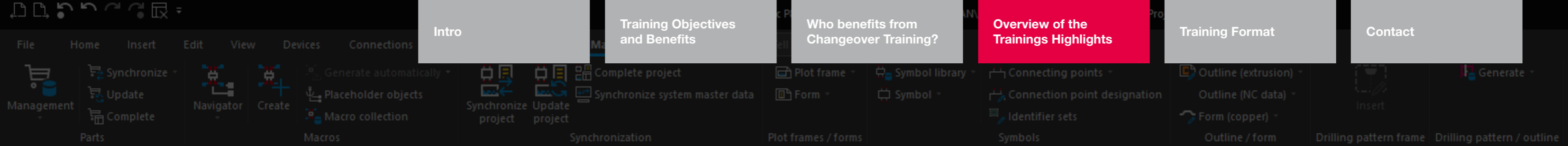
Training Objectives and Benefits

- Become acquainted with the Eplan Platform 2025 and its new, ergonomic user interface and modern operating concept.
- Experience the advantages of the new cloud and platform solutions.
- Benefit from valuable tips and tricks for engineering with EPLAN from our experienced trainers.

Who benefits from Changeover Training?

- The two-day Changeover Training is tailored to the requirements of users of the Eplan Platform Version 2.9 (or older) who wish to switch to using the new Eplan Platform 2025.





Overview of Trainings Highlights

■ New user experience on the Eplan Platform 2025

- Installation of the new Eplan Platform
- Customising and optimising the interface for specific users
- Central access to all import and export functionalities

■ Insert Centre

- Quickly find symbols, macros and devices using an object filter
- Save and use tags and favourites within the engineering workflows

■ Database Format

- New database format for devices, dictionaries and project management
- Migration of device data from Version 2.x

■ Device Management

- New interface for device management
- Find data faster and in a more targeted way thanks to the new combinable search function
- Managing schematics macros for different national standards and/or company standards

■ Cloud and platform solutions in Eplan

- Sharing and managing projects through the Eplan Cloud
- Making, commenting on, and versioning project changes

■ New functionalities

- Displaying images and QR codes for devices on the equipment
- Additional project planning options for cables
- Expanded editing for terminals

Training Format

Take part in our two-day training in our online classrooms. We will provide a complete training environment. **No EPLAN installation or licence necessary!**

Want to contact us directly?

Our team would be happy to assist you.

Phone: +44(0) 1709 704 000

E-mail: info@eplan.co.uk



Available as online training

All information and dates:
www.eplan.co.uk/service/training

Intro

Training Objectives
and Benefits

Who benefits from
Changeover Training?

Overview of the
Trainings Highlights

Training Format

Contact

EPLAN UK

Hellaby, Bramley, Rotherham, S66 8QY

Phone: +44(0) 1709 704 000

E-mail: info@eplan.co.uk

www.eplan.co.uk

PROCESS CONSULTING

ENGINEERING SOFTWARE

IMPLEMENTATION

GLOBAL SUPPORT

FRIEDHELM LOH GROUP

