

Let's focus on usability.

EPLAN Platform 2022

It's in your hands!

EPLAN Platform 2022 Consulting Workshop

A modern design, an intuitive user interface, a wide range of new functions, clever connections to the cloud and much, much more: the EPLAN Platform 2022 offers a wide range of possibilities.

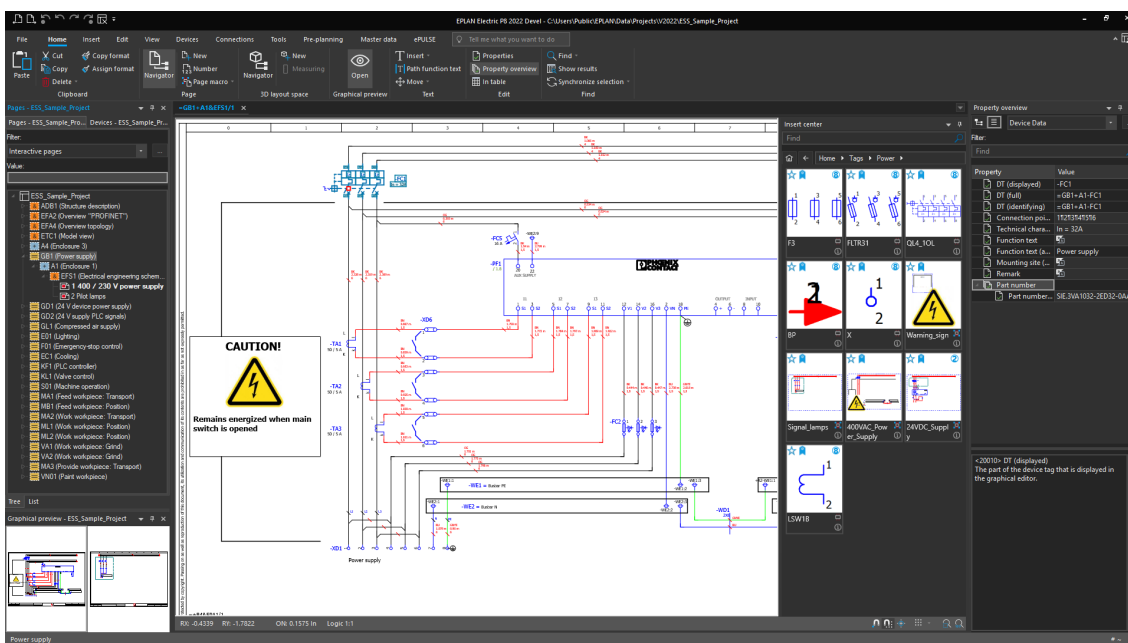
So that you can make the absolute most of the additional value Platform 2022 brings, we're pleased to be offering our professional expertise to support you update.

The topics and goals of the two-day workshop:

- Professional installation and setup of the new EPLAN Platform 2022
- How to take advantage of the new potential the new features bring
- Familiarise yourself with the new EPLAN environment
- The result: how to become productive within the new engineering environment.

Details of what we work together on:

- Individualised configuration and guidance on working with EPLAN Platform 2022, including cloud solutions
- IT implementation
- Adapting to new workflow processes
- Setup of the new device database according to the needs of its users
- Merge database from previous versions
- Setting up your user roles (rights management)
- How to use the new functions
- Tips & Tricks for using the new EPLAN Platform 2022



Are you interested in our value add services or do you have any questions? The EPLAN team are here to support and advise you.

Phone: +44 (0)1709 704100

Email: info@eplan.co.uk

EPLAN UK
Rittal Ltd · Braithwell Way · Hellaby Industrial Estate · Rotherham ·
South Yorkshire · S66 8QY
Phone: +44 (0)1709 704100
info@eplan.co.uk · www.eplan.co.uk



PROCESS CONSULTING

ENGINEERING SOFTWARE

IMPLEMENTATION

GLOBAL SUPPORT

FRIEDHELM LOH GROUP