

# Setting Up and Configuring the EPLAN Platform 2022

One Day, All the Information

Achieve a smooth changeover to EPLAN Platform 2022.



# One Day, All the Information: Setting Up and Configuring EPLAN Platform 2022

EPLAN Platform 2022 offers you a modern technological foundation for a completely new user experience. In our one-day training course, you will become familiarised with important new features and we will further provide you with useful tips for implementation.



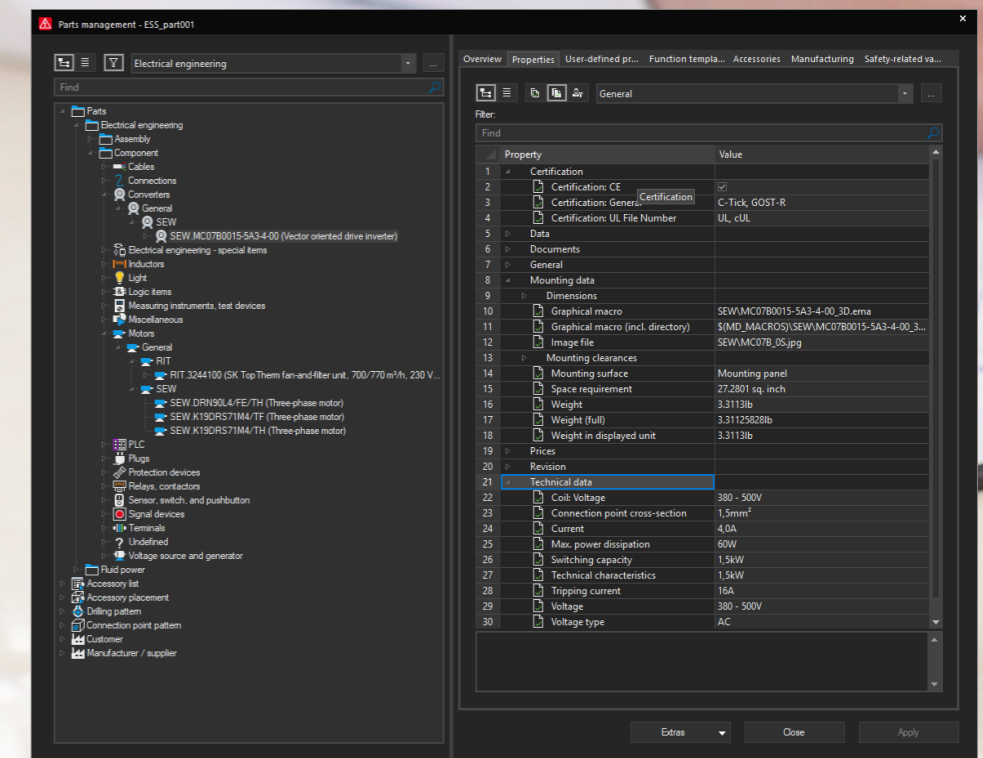
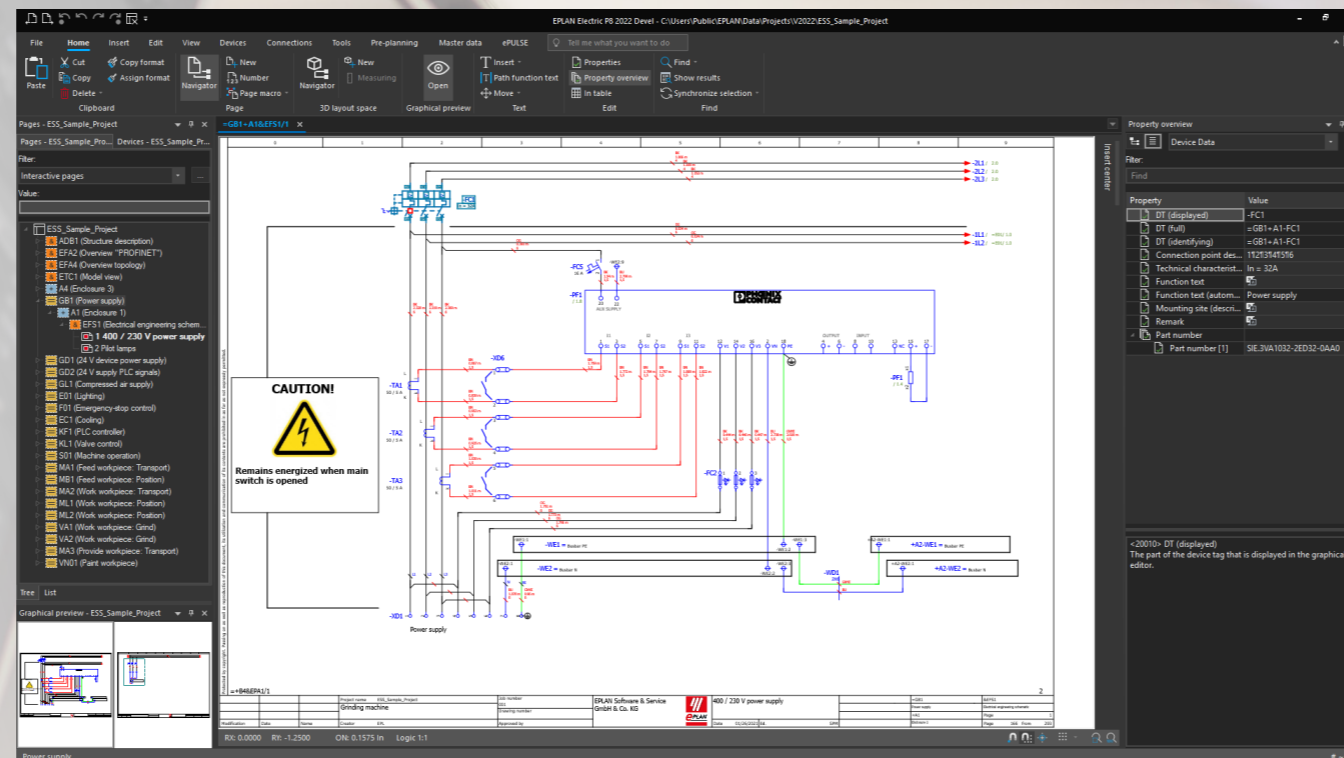
# Goals and added value

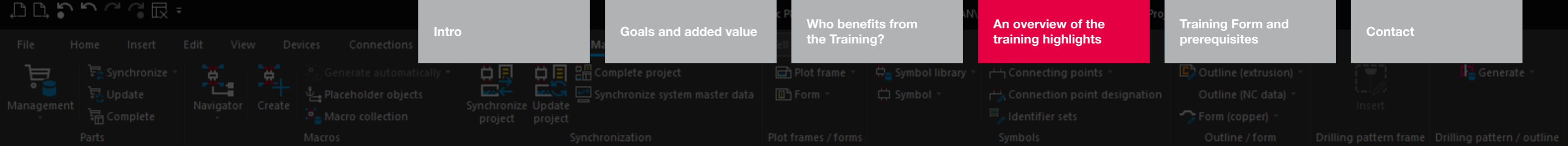
Get EPLAN Platform 2022 up and running quickly and securely in your company, even in parallel to other versions, including Version 2.9.

- Deepen your expertise about the EPLAN licencing technology
- Discover the advantages of the new subscription model from EPLAN
- Benefit from useful background information on topics including the common Identity Client for the EPLAN Platform 2022 and EPLAN Cloud as well as setting up organisations in the cloud environment
- Learn about the newly integrated rights management to clearly and securely define access rights for EPLAN users
- Use the new internal device database from EPLAN or take full advantage of migrating earlier database versions
- With our best practice guidance, you'll quickly and easily have success switching from a project template to a basic project

# Who benefits from Training?

- Training is tailored to the needs of key EPLAN users, administrators and those responsible for integrating the EPLAN Platform into a company's system landscape.





# An overview of training highlights

## ■ Platform Setup and Configuration

- Initial installation of the new EPLAN Platform 2022
- Parallel operation of the EPLAN Platform 2022 and Version 2.9
- Controlling and managing the rights for various user groups in EPLAN

## ■ Identity Client

- Information about the Identity Client for the EPLAN Platform 2022 and EPLAN Cloud
- Basics and the handling of the topic of organisations in the cloud environment

## ■ New device database – Migrating from Access

- Migrating old Access databases into the internal EPLAN database format
- Connecting existing SQL device databases

## ■ Converting project templates into basic projects

- Switching from project templates in previous platform versions to basic projects via the EPLAN Platform

## ■ Licencing technology & licence model

- Information about the licencing technology
- How to handle licences and changes, for instance for changes in hardware, revoking licenses
- The advantages of the new subscription model from EPLAN

## Training Form

Take part in our one-day training course – we offer both online courses and ones you can attend in person. No EPLAN installation or licence is necessary. We provide the complete training environment for you free of charge.

## You would like to contact us directly?

Our team is here to help advice and support you.

Phone: +44 (0)1709 704100

E-Mail: [info@eplan.co.uk](mailto:info@eplan.co.uk)



Available online or in a classroom

All the information, venues and  
dates can be found here:  
[https://solutions.eplan.co.uk/eplan-  
training-courses](https://solutions.eplan.co.uk/eplan-training-courses)

Intro

Goals and added value

Who benefits from the Training?

An overview of the training highlights

Training Form and prerequisites

Contact

### EPLAN UK

Braithwell Way · Hellaby Industrial Estate · Hellaby · Rotherham · South Yorkshire · S66 8QY  
Phone: +44 (0)1709 704100  
info@eplan.co.uk · eplan.co.uk

PROCESS CONSULTING

ENGINEERING SOFTWARE

IMPLEMENTATION

GLOBAL SUPPORT

FRIEDHELM LOH GROUP

