

EPLAN Platform 2023: Consulting Workshop

Optimised functions, new 3D engine, fine-tuned device management, clever connections to the cloud and much, much more. The new version of the software seamlessly continues to add value to the EPLAN Platform, as well as enabling greater engineering performance!

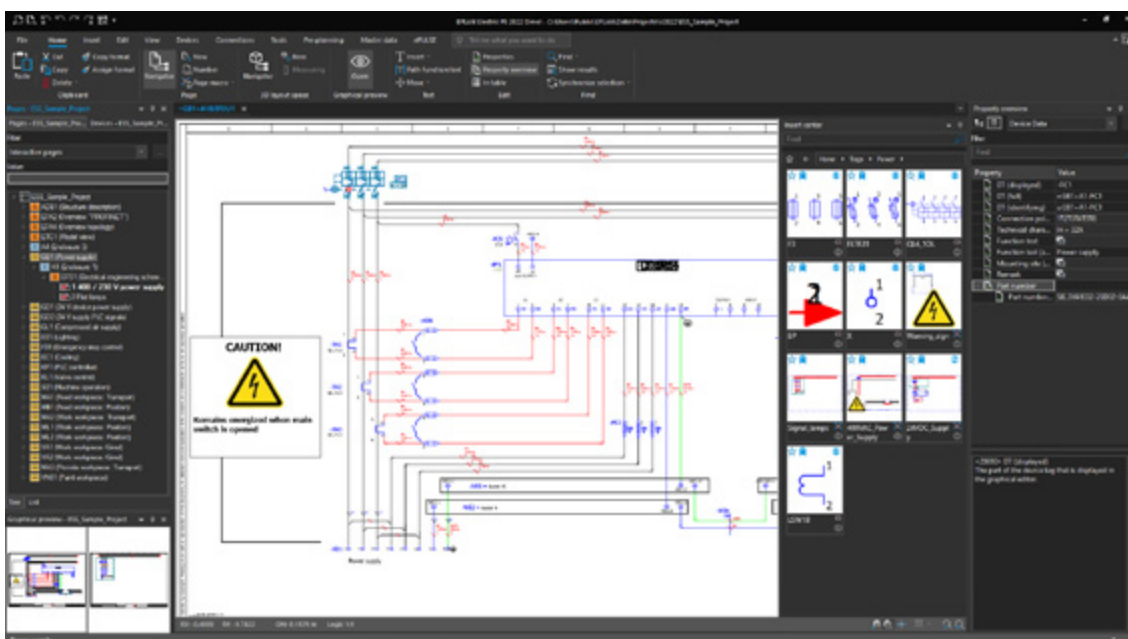
So that you can make the absolute most of the abundant additional value Platform 2023 brings, we're offering professional support and consulting workshops for when you decide to update.

Topics and goals of the two-day workshop:

- Get to know the new EPLAN environment
- Professional installation and setup of the new EPLAN Platform 2023
- Assistance with the creation of a concept for the operation of EPLAN in the Microsoft Azure Cloud
- How to take full advantage of new functionalities
- How to optimise collaboration with EPLAN cloud-solutions

Details of what we'll work together on:

- Individualised update to EPLAN Platform 2023
- Setup EPLAN cloud-solutions
- Design of a workflow and task-oriented user interface
- Setup of the new parts management according to the needs of your users
- Migration of data and projects from previous versions
- Determining possible uses for the new functions
- Tips & Tricks for the users



Are you interested in our consulting offerings or do you have any questions?

Please contact our office via e-mail:
info@eplan.co.uk

Alternatively, please contact your account manager who'll be happy to help you.

EPLAN UK
 Rittal Ltd · Braithwell Way · Hellaby Industrial Estate · Hellaby ·
 Rotherham · South Yorkshire · S66 8QY
 Phone: +44 (0)1709 704100
info@eplan.co.uk · www.eplan.co.uk



PROCESS CONSULTING

ENGINEERING SOFTWARE

IMPLEMENTATION

GLOBAL SUPPORT

FRIEDHELM LOH GROUP