

Intro

Course aims and
benefits

Who benefits from
changeover training?

Training highlights
overview

Training method and
requirements

Contact

Changeover Training EPLAN Platform 2023

Two Days Full of Tips and Tricks

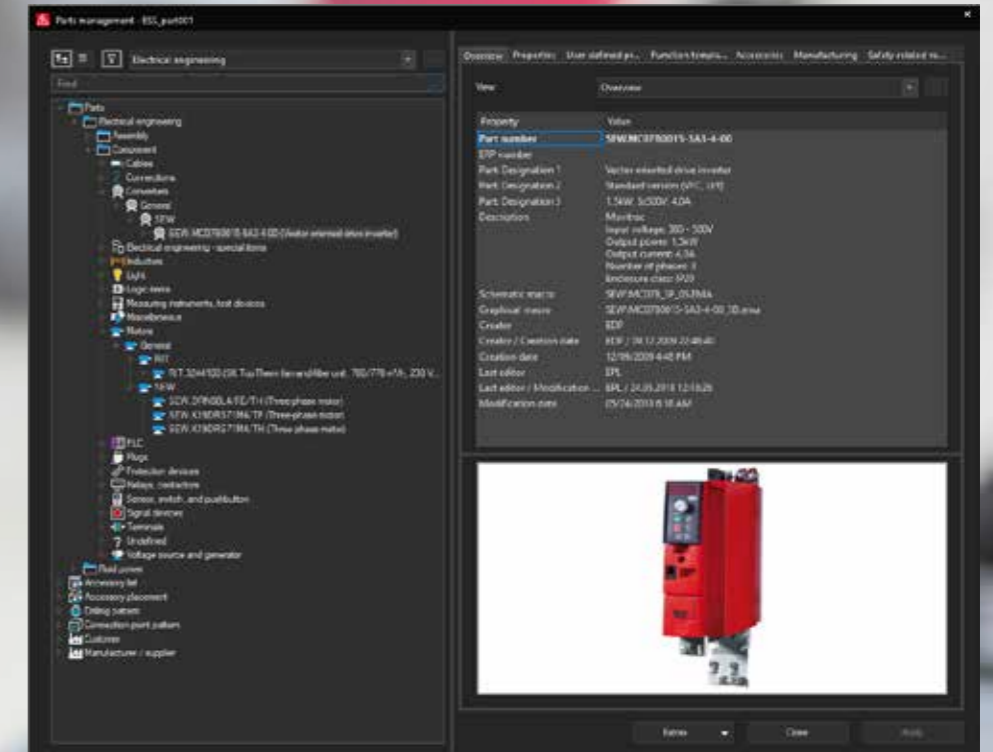
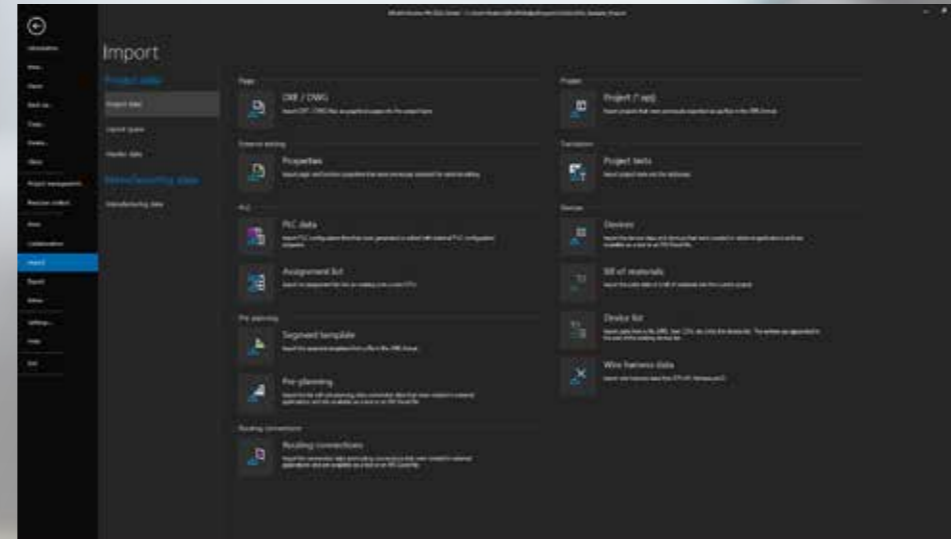
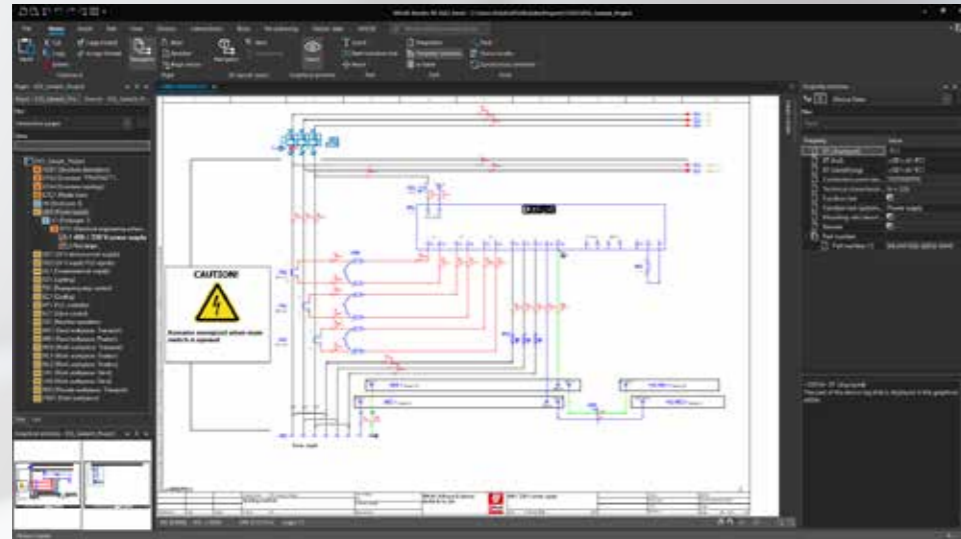
We will help you transition to the new
generation of the EPLAN Platform



Changeover Training EPLAN Platform 2023

The EPLAN Platform 2023 offers a modern, technical foundation for a completely new user experience. In our two-day training, we will get you up to speed on the most important new features and offer you useful tips and tricks for your daily work in engineering.



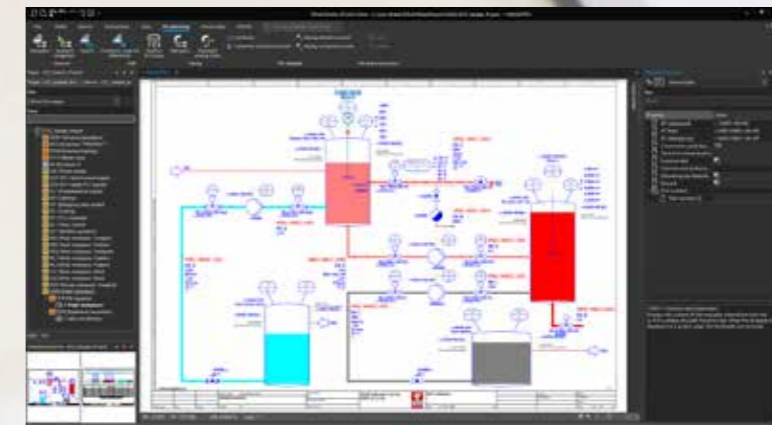
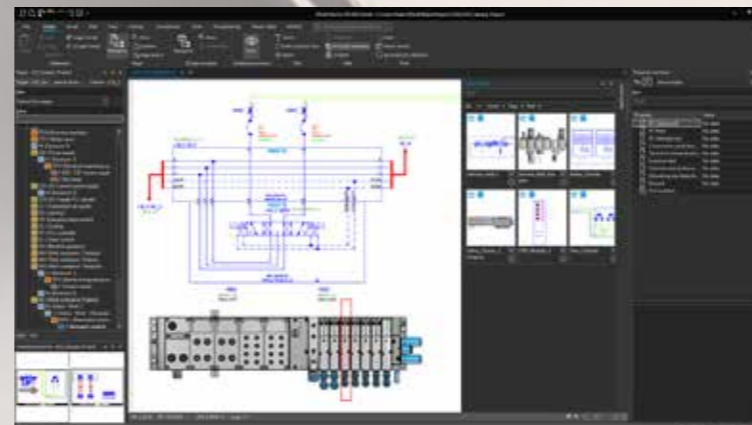
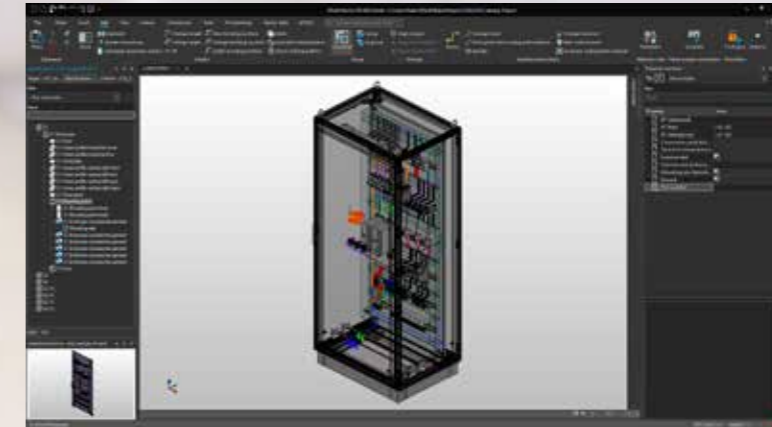
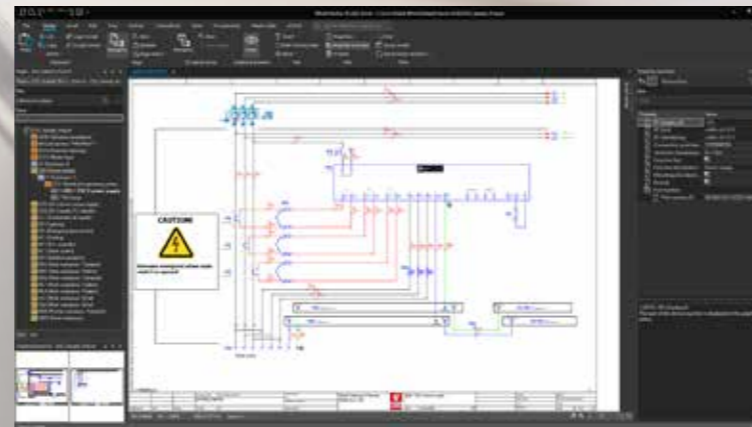


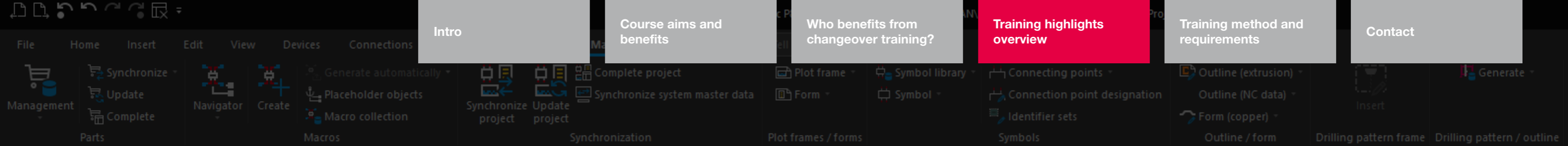
Course aims and benefits

- Get to know the EPLAN Platform 2023 with its new, more ergonomic user interface and modern operating concept.
- Experience the advantages of the new cloud and platform solutions.
- Benefit from valuable tips and tricks for engineering from our experienced EPLAN trainers.
- Learn the latest developments through practical examples.
- Benefit from our illustrated, digital training documentation.

Who benefits from changeover training?

- This two-day transition training is tailored to the needs of users of the EPLAN Platform Version 2.9 (or older) who would like to successfully transition to EPLAN Platform 2023.





Overview of training highlights

■ New user experience in the EPLAN Platform 2023

- Simpler, more efficient learning process with the new EPLAN Platform
- Effectively use the menu or symbol bar for fast EPLAN access
- Adapt and optimise the user interface for unique user needs

■ Insert center

- Quickly find and use symbols, macros and devices
- Establish and use features like “Tags” and “Favourites” in the engineering workflow
- Expanded information area with important features and configurable tables

■ Backstage view of EPLAN Platform 2023

- Central processing of project information and settings
- Unified access for all import and export features

■ New parts management

- Fewer tabs and an individually adjustable display offer clearer organisation
- Find data faster and with a more targeted approach using the new combinable search function and schematic technology
- More flexible part creation, adaptation with new variant management
- Establishing circuit diagram layout macros for different standards or company standards

■ Cloud and platform solutions in EPLAN

- Share projects via the EPLAN cloud and manage them with eMANAGE
- Execute, comment and visualise project changes with EPLAN eVIEW in the browser
- Easily release parts data via eSTOCK for specific users and utilise as a data source

■ PLC and cable

- Allocate PLC-E-/A channel-oriented connections in tabular form, clearly and conveniently
- Efficient cable configuration using the new dialogue interface
- Place shielding from navigators

Training method

Take part in our two-day training – we are happy to offer you classes online. We will provide a complete training environment to you free of charge.

No EPLAN installation or license necessary!

Want to contact us directly?

Our team would be happy to assist you.

Phone: +44(0)1709 704 000

E-mail: info@eplan.co.uk



Available as online training

All information and dates:
www.eplan.co.uk/services/training

Intro

Course aims and
benefits

Who benefits from
changeover training?

Training highlights
overview

Training method and
requirements

Contact

EPLAN UK

Hellaby, Bramley, Rotherham S66 8QY

Phone: +44(0)1709 704 000

Email: info@eplan.co.uk | www.eplan.co.uk

PROCESS CONSULTING

ENGINEERING SOFTWARE

IMPLEMENTATION

GLOBAL SUPPORT

FRIEDHELM LOH GROUP

