

Intro

Training benefits and objectives

Who profits from the Update Training?

An overview of the training highlights

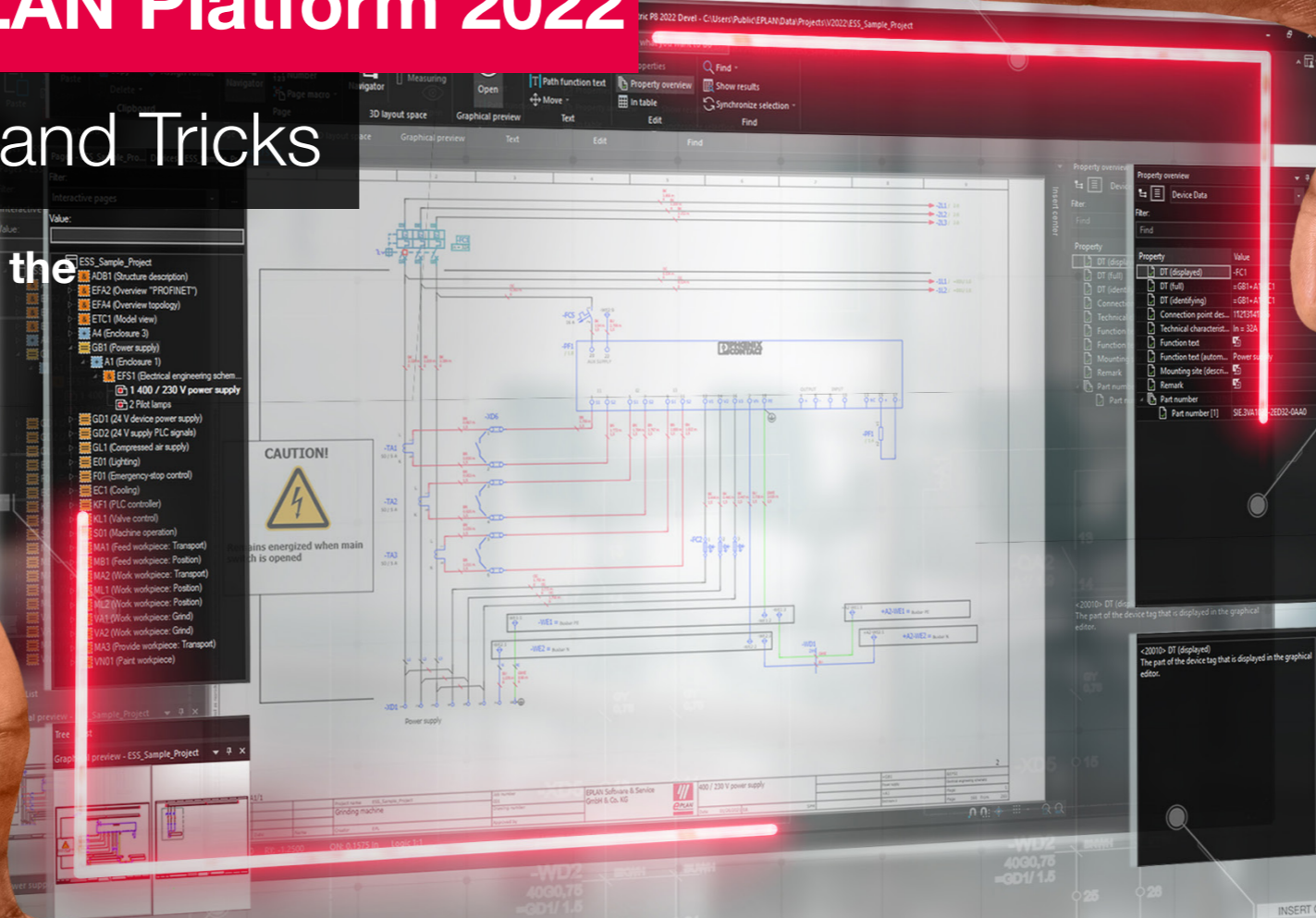
Training Form and prerequisites

Contact

Update training EPLAN Platform 2022

Two Days Full of Tips and Tricks

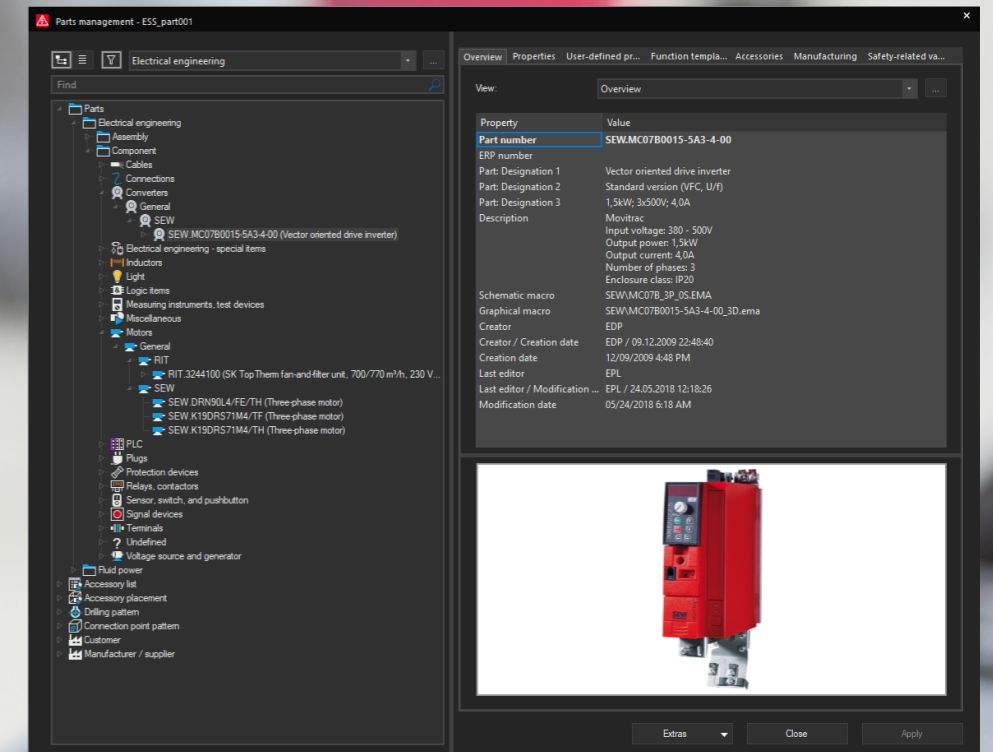
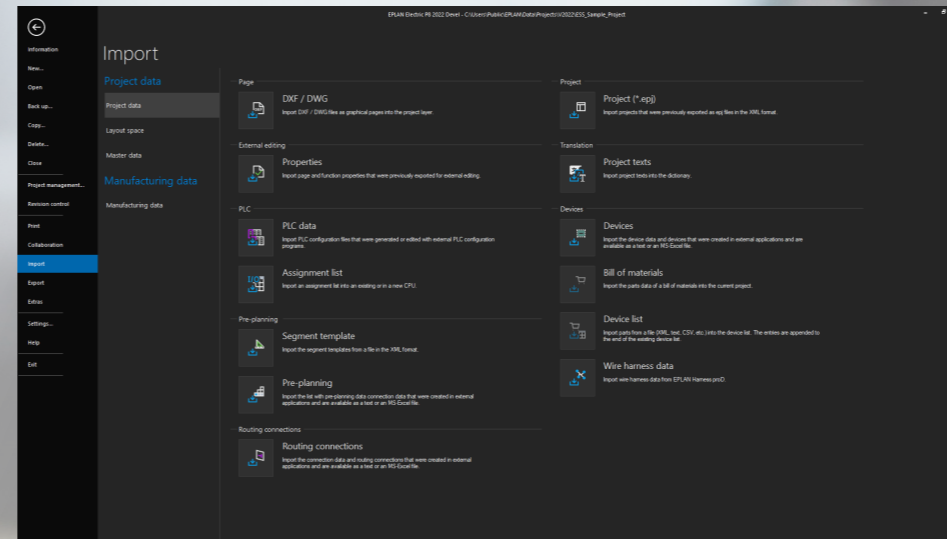
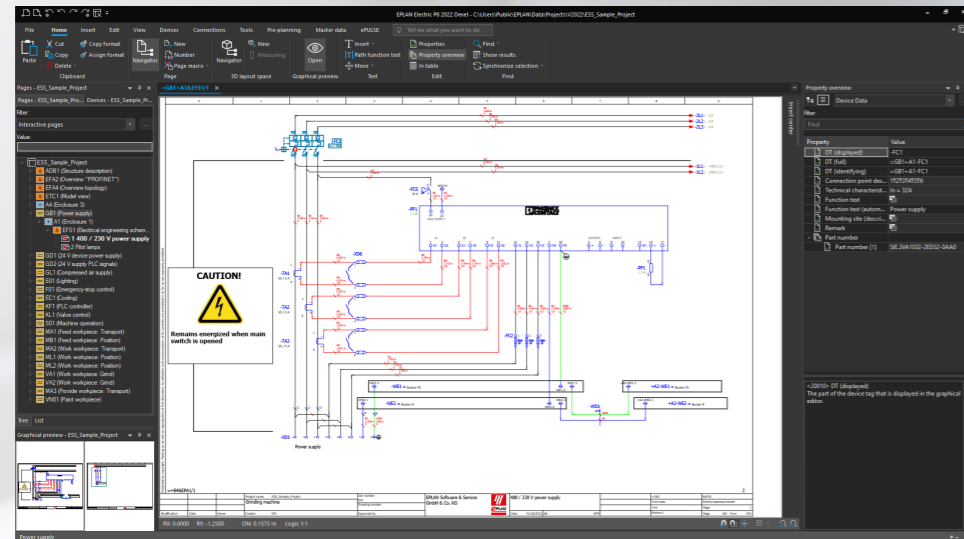
Achieve a smooth changeover to the new EPLAN Platform 2022.



Update training EPLAN Platform 2022

The EPLAN Platform 2022 offers you a modern technological foundation for a completely new user experience. In our two-day Update Training course, our engineers will enable you to become familiar with the important new features in Platform 2022, and how to get the most out of them. The course will also provide many useful tips and tricks for your daily engineering work.



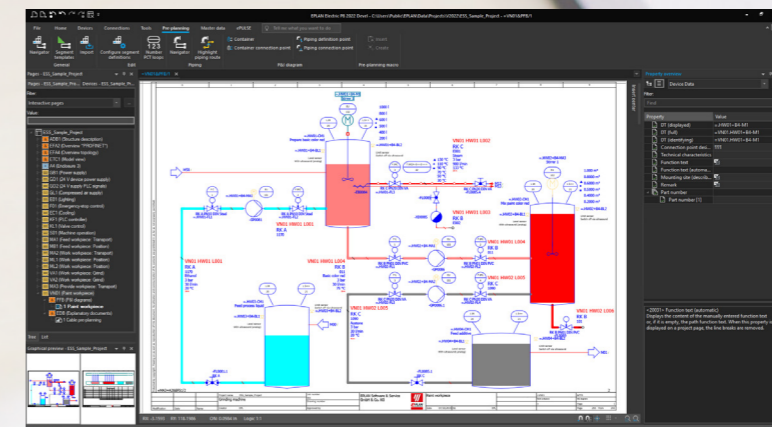
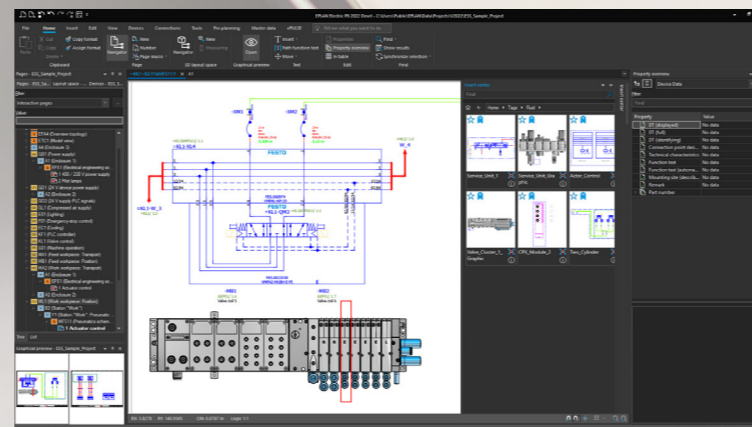
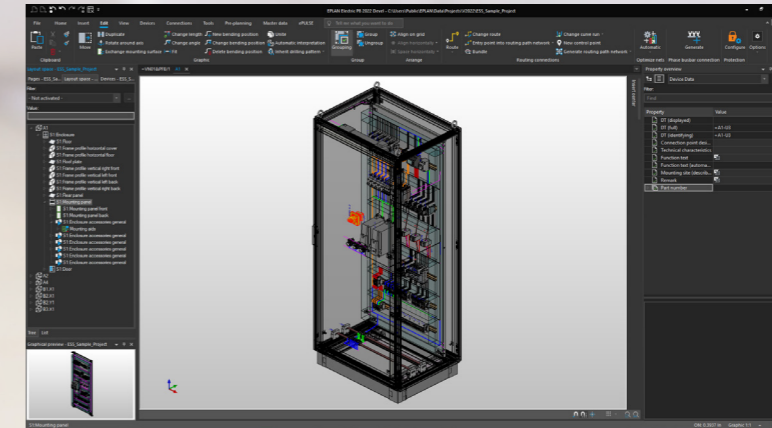
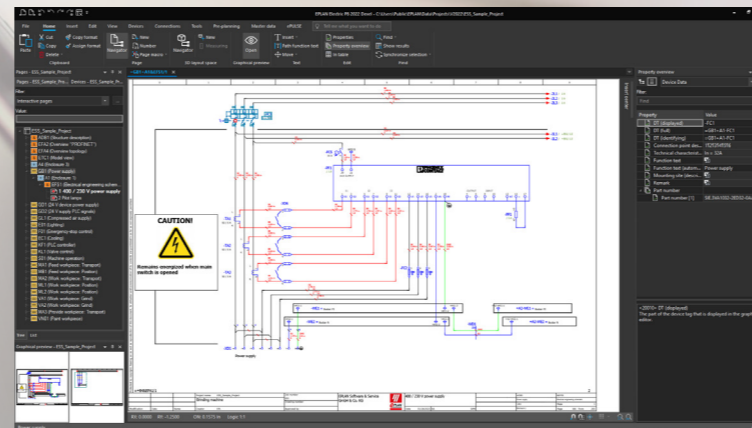


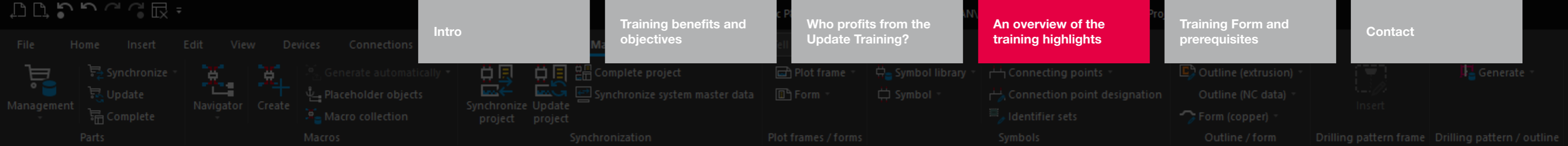
Training benefits and objectives

- Get to know the EPLAN Platform 2022 with its new, more ergonomic user interface and modern operating concept
- Take full advantage of the benefits of the new device management feature with many practical functions, including variant management
- Discover the benefits of the new cloud solution EPLAN eMANAGE
- Avail yourself of the valuable tips and tricks from our experienced trainers for engineering with EPLAN

Who profits from Update Training?

- The two-day Update Training course is tailored towards the needs for the following platform solutions: EPLAN Electric P8, Pro Panel, Fluid and Preplanning.





An overview of the training highlights

■ The new user experience on the EPLAN Platform 2022

- Your quick and easy introduction to the new EPLAN Platform 2022
- New 2D graphics with strong performance, even when processing large amounts of data in schematics projects
- Optimisation in 3D designing

■ Ribbons in EPLAN – How they work

- Effectively use the new ribbon technology in EPLAN
- Customise and optimise the user interface

■ Insertion Center

- Quickly find and use symbols, macros and devices
- Save and use functions such as “Tags” and “Favourites” in the engineering workflow

■ Backstage View in the EPLAN Platform 2022

- A clear presentation, new workflow for opening and restoring projects
- Use the central import and export functions

■ New centralised device management

- Redesigned tabs, customisable appearance, use schema technology
- New variant management tool: Manage device properties all together

■ Features and Updates

- Efficiently use project options in engineering

■ Licencing

- The advantages of the new subscription model

■ Cloud and platform solutions cleverly integrated with EPLAN eMANAGE

- Direct integration of the new cloud solution in the EPLAN Platform enables the easy uploading and downloading of projects

Training Form

Take part in our two-day training course – we offer both online courses and ones you can attend in person. No EPLAN installation or licence is necessary. We provide the complete training environment for you free of charge.

You would like to contact us directly?

Our team is here to help advice and support you.

Phone: +44 (0)1709 704100

E-Mail: info@eplan.co.uk



Available online or in a classroom

All the information, venues and dates can be found here:
<https://discover.eplan.co.uk/training-dates>

Intro

Training benefits and objectives

Who profits from the Update Training?

An overview of the training highlights

Training Form and prerequisites

Contact

EPLAN UK

Braithwell Way · Hellaby Industrial Estate · Hellaby ·
Rotherham · South Yorkshire · S66 8QY
Phone: +44 (0)1709 704100
info@eplan.co.uk · www.eplan.co.uk

PROCESS CONSULTING

ENGINEERING SOFTWARE

IMPLEMENTATION

GLOBAL SUPPORT

FRIEDHELM LOH GROUP

